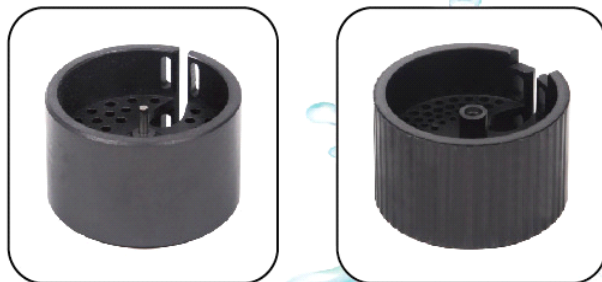


Domestic

Volumetric Rotary Piston Water Meter

PD-15B~40B



Applications

- Measuring the volume of cold potable water passing through the pipeline for residential application.

Available Sizes

- 1/2", 3/4", 1", 1 1/2", 1 3/4".
15mm, 20mm, 25mm, 32mm, 40mm.

Standards

- ISO 4064 Class C

Features:

- Various sizes available: range from 15mm to 40mm.
- Ensures high sensitivity and accurate registration throughout a wide flow range.
- Mechanical transmission offers maximum reliability.
- Liquid-sealed register offers long term clear reading.
- Low starting flow rate.
- Digit counters provide easy reading.
- Internal non-return valve.
- Tamper proof register.
- Internal strainer.
- The meter body structure (upper body, lower body and retaining ring) improves reliability of performance and extend working life of meters.

Options:

- Normal piston and groove piston.
- Pulse output option.
- Several body lengths for Dn15 meter.
- Cubic Meter (m³) and U.S. Gallon (USG) for choice.

Technical Specifications:

- Maximum Working Temperature:** 40°C for cold potable water meter.
- Maximum Working Pressure:** 16Bar
- Body:** Corrosion Proof Copper Alloy
- Coupling Threads:** BSP

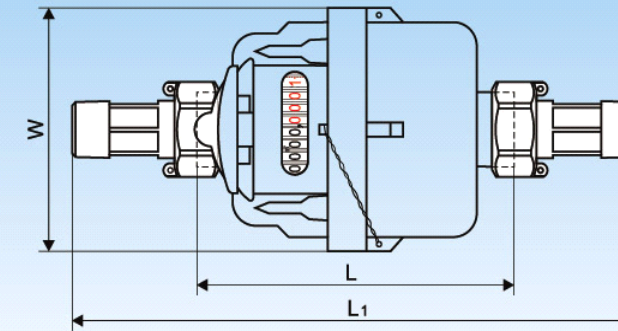
Installation Requirements:

- The meter can be installed in any position.
- The pipeline should be flushed before meter installation.
- The meter must be installed according to the arrow direction indicated on the meter body.
- The meter should be constantly full of water during operation.

Domestic

Volumetric Rotary Piston Water Meter

PD-15B~40B



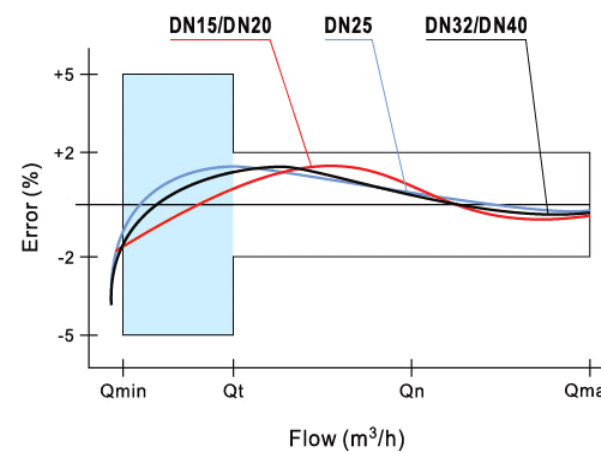
Dimensions and Weights

Nominal diameter	mm	DN	15	20	25	32	40
Body length	mm	L	115	130	170	260	300
Overall length	mm	L1	209	234	290	384	431
Width	mm	W	90	96	112	139	174
Weight without connectors	Kg		0.95	1.2	1.8	4.2	6.5

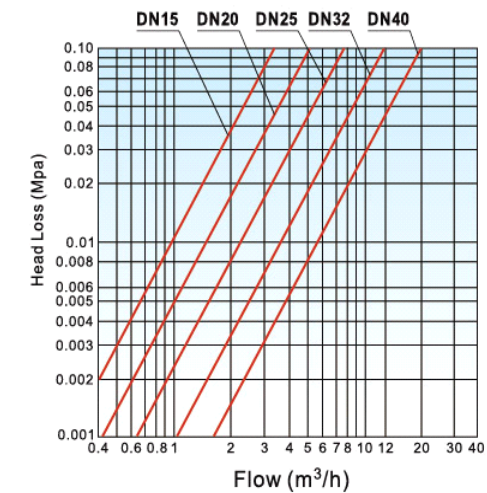
Maximum Permissible Error:

- In the lower zone from Q_{min} inclusive up to but excluding Q_t is ± 5%.
- In the upper zone from Q_t inclusive up to and including Q_{max} is ± 2%.

Accuracy Curve



Head Loss Curve



Performance Data

Nominal diameter	mm	DN	15	20	25	32	40
Maximum flowrate	m ³ /h	Q _{max}	3.0	5.0	7.0	12.0	20.0
Nominal flowrate	m ³ /h	Q _n	1.5	2.5	3.5	6	10.0
Transitional flowrate	l/h	Q _t	22.5	37.5	52.5	90	150
Minimum flowrate	l/h	Q _{min}	15	25	35	60	100
Maximum reading		m ³	9999.99998				99999.9998
Minimum reading		m ³	0.00002				0.0002